

Apartments for sale in Katholiki, Limassol - Town Centre

CEA 
Cyprus Estate Agency



About the project

Located 300m from Limassol's historic city center, this premier residential development in Katholiki offers 13 modern apartments across four floors, including one to three-bedroom units and two penthouses.

Positioned between Makarios III, Commercial Street and Anexartisias Shopping Street, it provides convenient access to shopping, dining, entertainment, public transport, the Marina, and the Sea.

The project boasts contemporary architecture, high-quality finishes, and state-of-the-art facilities, making it an ideal investment opportunity in Cyprus real estate.

Key Features:

- **Prime Location:** Just 300m from Limassol's historic city center.
- **Variety of Units:** 13 modern apartments including one to three-bedroom options and two luxurious penthouses.
- **Unmatched Convenience:** Close to Makarios III, Commercial Street and Anexartisias Shopping Street.
- **High Demand:** Strategic location ensures excellent rental yields and strong investment returns.
- **Quality Design:** Contemporary architecture with high-quality finishes and state-of-the-art facilities.
- **Investment Opportunity:** Early bird pricing with discounts below market rates for enhanced long-term value and growth potential.

Historical City Centre: **500m**

Molos Promenade: **550m**

Access to Highway: **2000m**

Saripolou Square: **500m**

Old Port: **500m**

Limassol Marina: **500m**

Makarios III Avenue: **550m**



CEA 
Cyprus Estate Agency

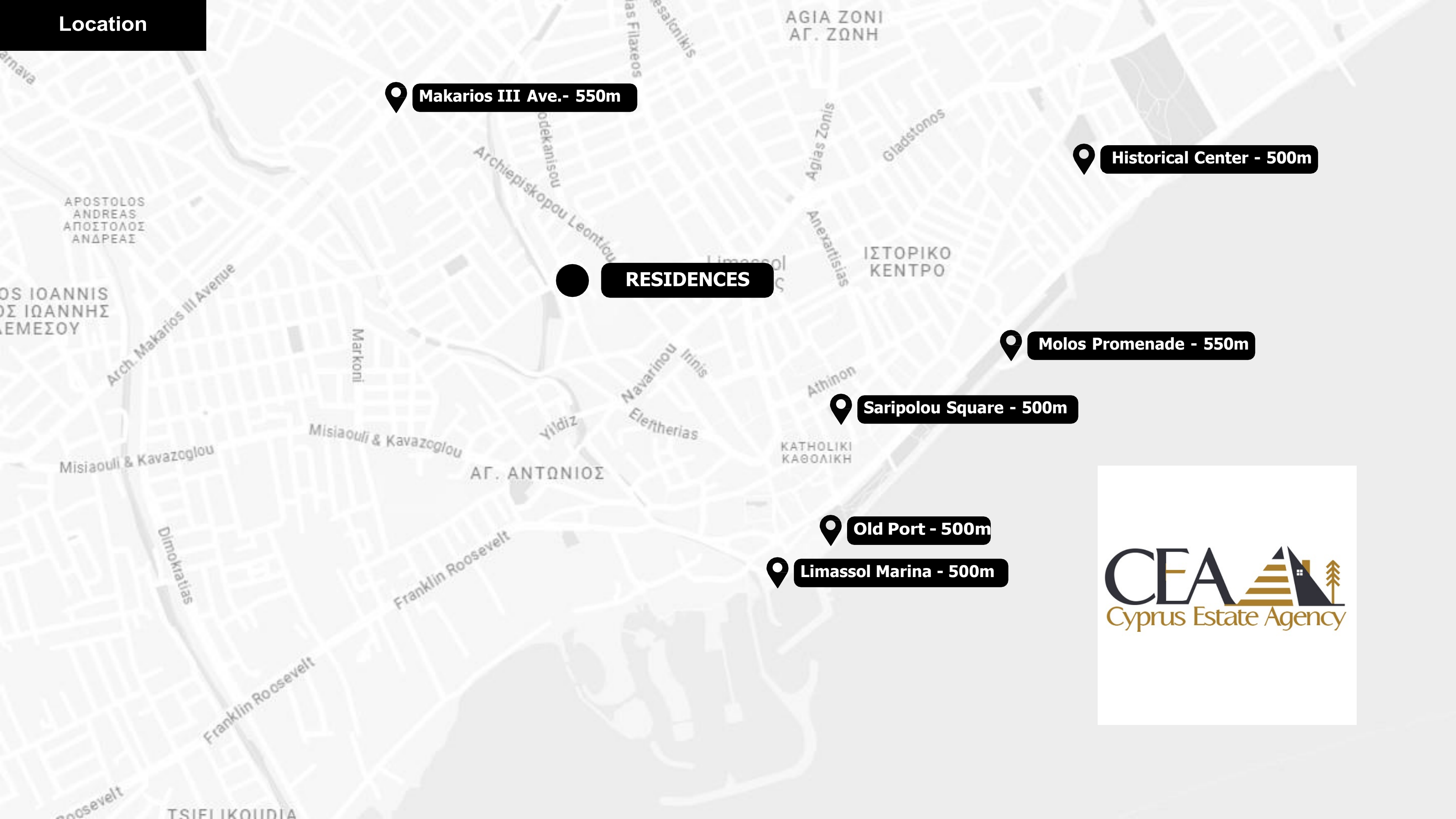
A modern bedroom interior featuring a bed with light-colored bedding and a dark brown throw, a wicker chair with a cushion, and a large potted plant with broad green leaves. The room has a minimalist aesthetic with dark wood accents and a neutral color palette.

CEA 
Cyprus Estate Agency



CEA
Cyprus Estate Agency

Location



Makarios III Ave. - 550m

Historical Center - 500m

RESIDENCES

Molos Promenade - 550m

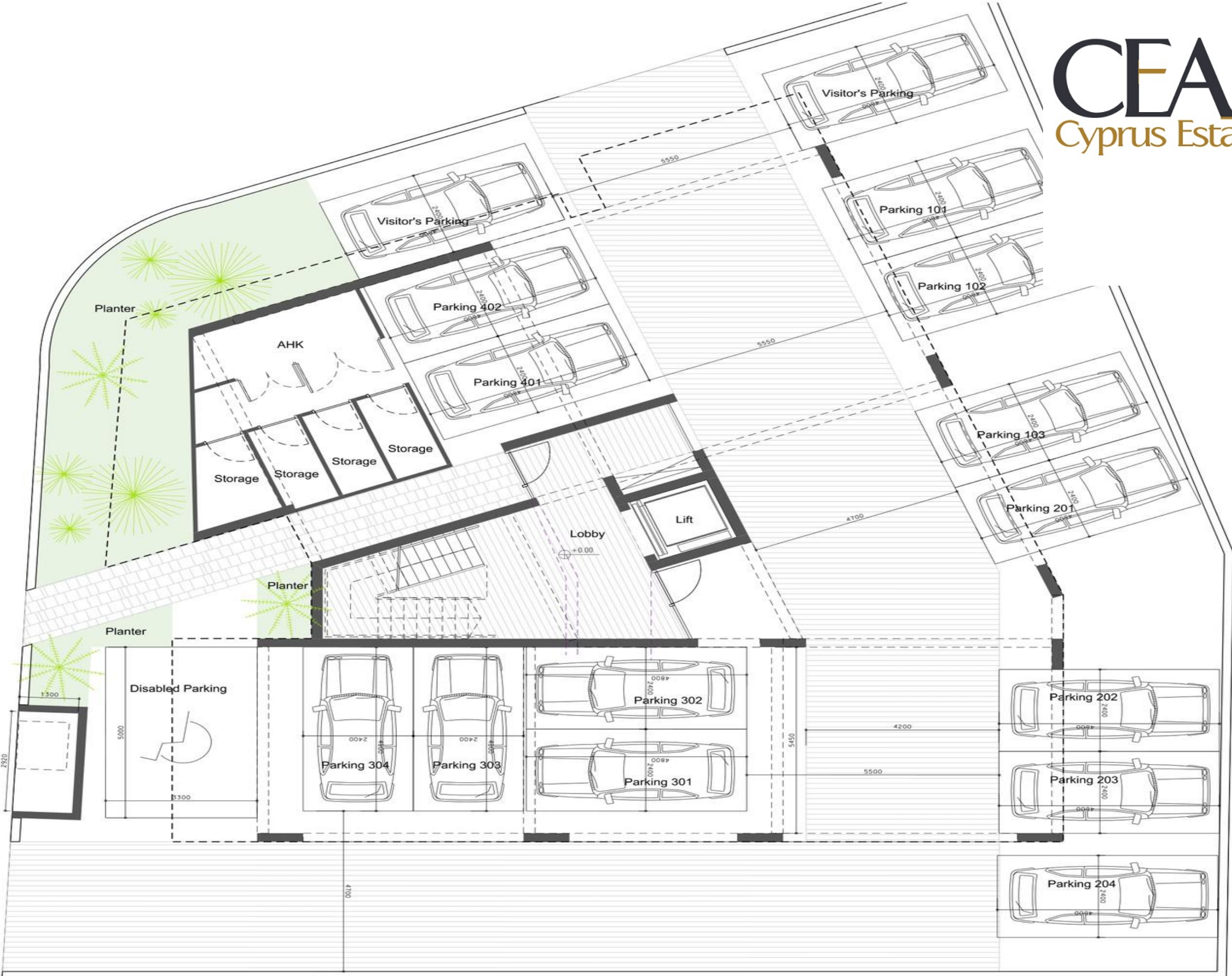
Saripolou Square - 500m

Old Port - 500m

Limassol Marina - 500m



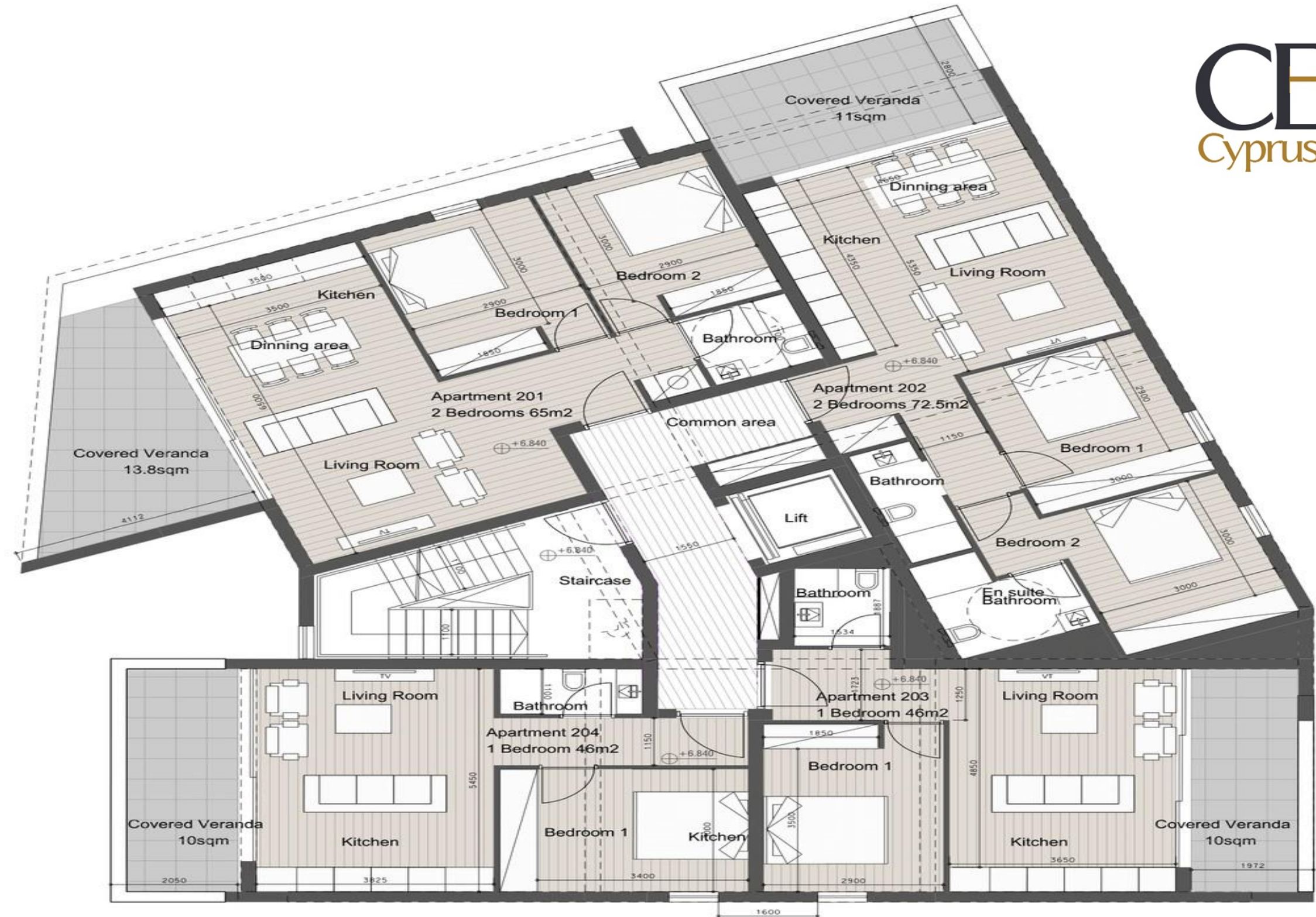
GROUND FLOOR



1ST FLOOR



2ND FLOOR



3RD FLOOR



Roof Garden



Roof garden Apartment 401
40sqm

Roof garden
Apartment 40.2
46sqm

gg